

This drawing involves proprietary design rights of Tyco Electronics Corporation, and all design, manufacture, reproduction, use and sale rights regarding the same are expressly reserved. It is submitted for a specific purpose and the recipient by accepting this drawing, assumes custody and control and agrees to take reasonable precautions; (a) that this drawing will not be copied and reproduced, in whole or in part, or its contents revealed in any manner, or to any person except to meet the purpose for which it was delivered and (b) that any special features peculiar to this design will not be incorporated in other projects without the expressed written permission of Tyco Electronics Corporation.

REVISIONS			
EC	REV	DESCRIPTION	DATE
-	A	NEW RELEASE	08/29/05
-	A1	UPDATED REFERENCE TYCO PART NUMBERS	09/20/05

NOTES: UNLESS OTHERWISE SPECIFIED

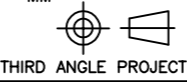


- PART NUMBER CHANGES AND OR DESIGN CHANGES AFFECTING ITEM INTERCHANGEABILITY REQUIRE PRIOR ELCON APPROVAL AND AUTHORIZATION BY REVISION TO THIS DRAWING.
- ITEMS PROVIDED TO THIS SPECIFICATION SHALL BE PERMANENTLY IDENTIFIED WITH THE FOLLOWING INFORMATION: MFG. IDENTIFICATION, PART NUMBER AND DATE CODE OF MANUFACTURE.
- MOUNTING FLANGES BUSHING ACCEPT 6/32 SCREW (ϕ .156 CLEARANCE HOLE, FLOAT MOUNT) OR 8/32 SCREW (ϕ .173 CLEARANCE HOLE, FIXED MOUNT), USER SUPPLIED.
- FINISH:
SIZE #12 CRIMP CONTACT - SILVER PLATED
- A MODULE CRIMP CONTACTS ARE PACKAGED SEPARATELY WITH THE CONNECTOR ASSEMBLY AND SHIPPED AS A KIT.
- PIN CONNECTOR ASSEMBLY INCLUDES END CAPS, LOCKING RAILS, SCREWS, HEX NUTS AND WASHERS.

7. REFERENCE PIN MODULE/CONTACT TABLE

MODULE	MOD QTY	PART NUMBER	DESCRIPTION	CONTACT SIZE	CONTACT QTY
A	1	1648461-1	PIN HOUSING, A MODULE	NONE	NONE
		1766193-1	PIN CONTACT, CRIMP, STD (.43)	12	2
		1766195-1	PIN CONTACT, CRIMP, PREMATE (.46)	12	1

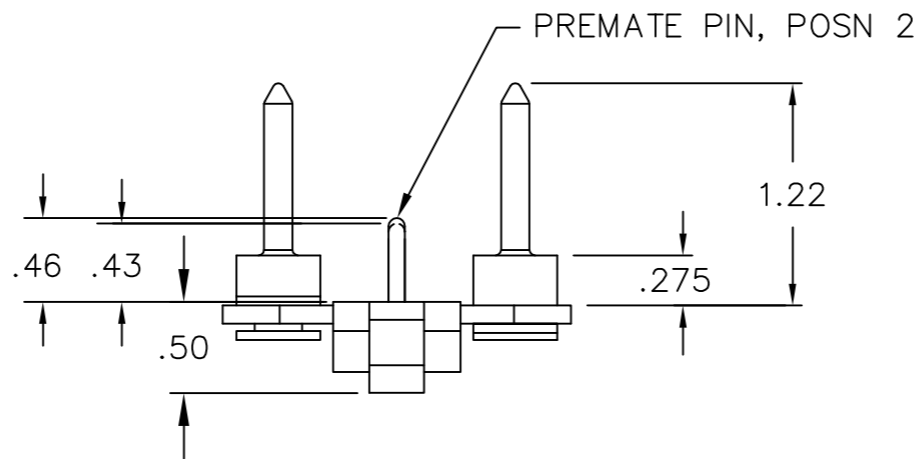
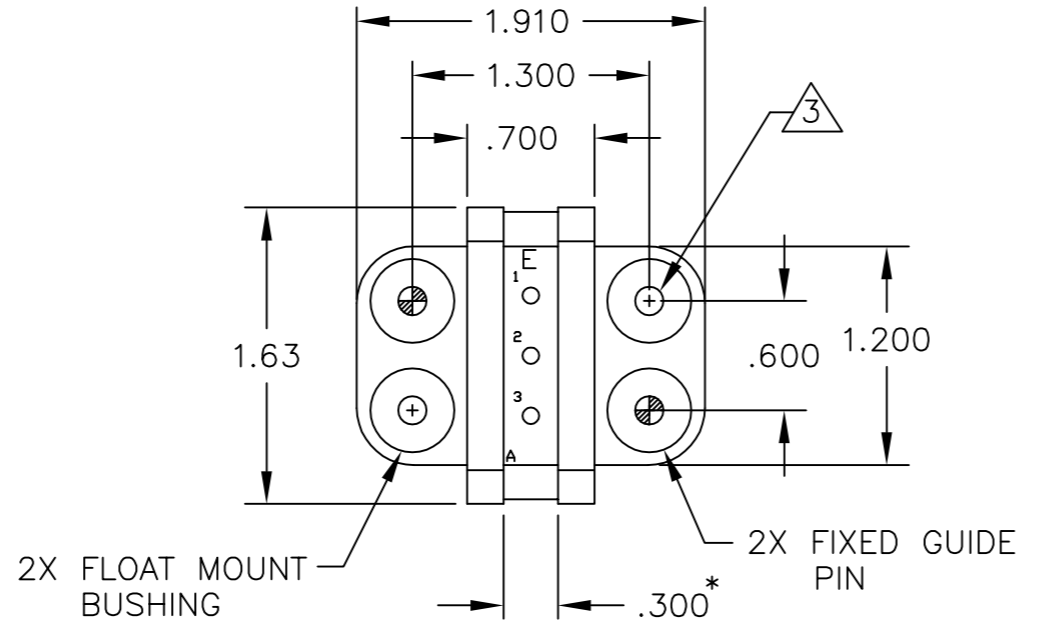
- MATES WITH SOCKET CONNECTOR PN 6646086-1 (CUSTOMER DRAWING C-6646086).
- REFERENCE TYCO PART NUMBER 6646085-1.

PART NUMBER	DESCRIPTION	QTY
6648251-1	END CAP, FLOAT MOUNT GUIDE PIN	2
1650469-1	LOCKING RAIL, EXTRUDED (TOP & BOTTOM RAILS)	2
1766846-1	SCREW, PAN HEAD, #2-64 x .625 LONG	2
1-5021068-7	NUT, HEX, MACHINE SCREW	2
1766850-1	WASHER, FLAT	2
5021074-1	WASHER, SPRING LOCK	2

 THIRD ANGLE PROJECTION UNLESS OTHERWISE SPECIFIED DIMENSIONS ARE IN INCHES (METRIC) TOLERANCES ANGLES \pm .5° DECIMALS .XXX \pm .010 (.25) .XX \pm .02 (.3)	DRAWN M. ALIM	DATE 08/29/05	 Tyco Electronics Corporation Menlo Park, Ca 94025 	
	CHECKED			TITLE CONNECTOR, PIN, DOMINO NOTES PN 6646085-1
	APPROVED		APPROVED	SIZE B
	APPROVED D. CHAU	09/20/05	DCA APPROVED M. ALIM	DWG NUMBER C = 6646085
ACAD FILE NUMBER	C6646085A1.DWG		REV. A1	
DWG SCALE 1=1			SH 1 OF 3	

This drawing involves proprietary design rights of Tyco Electronics Corporation, and all design, manufacture, reproduction, use and sale rights regarding the same are expressly reserved. It is submitted for a specific purpose and the recipient by accepting this drawing, assumes custody and control and agrees to take reasonable precautions; (a) that this drawing will not be copied and reproduced, in whole or in part, or its contents revealed in any manner, or to any person except to meet the purpose for which it was delivered and (b) that any special features peculiar to this design will not be incorporated in other projects without the expressed written permission of Tyco Electronics Corporation.

REVISIONS			
EC	REV	DESCRIPTION	DATE
		SEE SHEET 1	

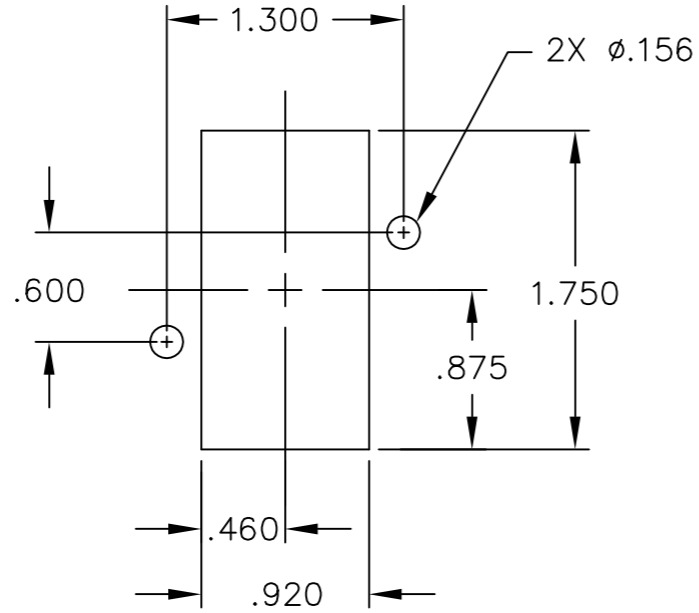


* ACTUAL RAIL LENGTH SHALL BE .400

INCH OR INCH (MM) THIRD ANGLE PROJECTION UNLESS OTHERWISE SPECIFIED DIMENSIONS ARE IN INCHES (METRIC) TOLERANCES ANGLES ± .5° DECIMALS .XXX ± .010 (.25) .XX ± .02 (.3)	DRAWN M. ALIM	DATE 08/29/05	 Tyco Electronics Corporation Menlo Park, Ca 94025 	TITLE CONNECTOR, PIN, DOMINO PIN CONFIGURATION PN 6646085-1	
	CHECKED	APPROVED			
ACAD FILE NUMBER C6646085A1.DWG		DWG SCALE 1=1		SH 2 OF 3	

This drawing involves proprietary design rights of Tyco Electronics Corporation, and all design, manufacture, reproduction, use and sale rights regarding the same are expressly reserved. It is submitted for a specific purpose and the recipient by accepting this drawing, assumes custody and control and agrees to take reasonable precautions; (a) that this drawing will not be copied and reproduced, in whole or in part, or its contents revealed in any manner, or to any person except to meet the purpose for which it was delivered and (b) that any special features peculiar to this design will not be incorporated in other projects without the expressed written permission of Tyco Electronics Corporation.

REVISIONS			
EC	REV	DESCRIPTION	DATE
		SEE SHEET 1	



PIN PANEL MOUNT CUTOUT

INCH OR INCH (MM) THIRD ANGLE PROJECTION UNLESS OTHERWISE SPECIFIED DIMENSIONS ARE IN INCHES (METRIC) TOLERANCES ANGLES ± .5° DECIMALS .XXX ± .010 (.25) .XX ± .02 (.3)	DRAWN M. ALIM	DATE 08/29/05	tyco Tyco Electronics Corporation Electronics Menlo Park, Ca 94025 ELCON	
	CHECKED		TITLE CONNECTOR, PIN, DOMINO PANEL MOUNT CUTOUT PN 6646085-1	
	APPROVED		SIZE B	DWG NUMBER C= 6646085
	APPROVED D. CHAU	09/20/05		REV. A1
	DCA APPROVED M. ALIM	09/23/05		
	ACAD FILE NUMBER	C6646085A1.DWG		DWG SCALE 1=1 SH 3 OF 3